



# AF 52

## Advantages

- Efficiency: 100Lm/W
- High Quality Philips and Cree etc LED Chips
- Moisture tolerant IP66 and the anti-collision level IK08

Multi-function  
High light  
efficiency



*GRAY*



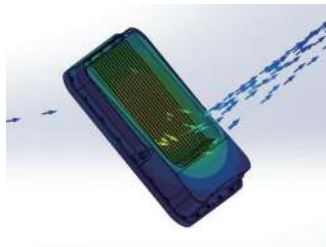
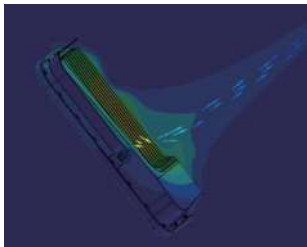
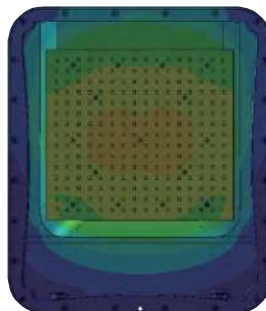
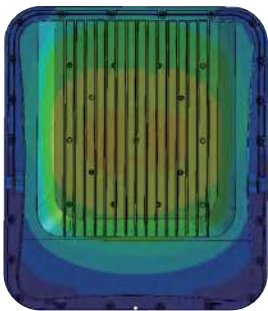
*BLACK*



## DISPALY

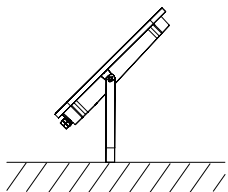


## ROAD SIMULATION

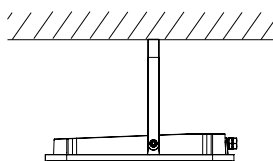


## INSTALLATION

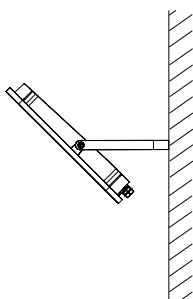
Floor Installation



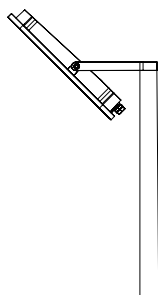
Ceiling Installation



Suction Wall Installation



Post Installation



# AF52

## Technical Data

LED Chip Brand	Epistar
LED Chip Type	SMD2835
Luminous Efficacy	100LM/W
Color Rendering Index (RA)	> 70
Color Temperature	2200K-6500K
Beam Angle	120°
Number Of Lens	A:40 Pcs   B:60 Pcs   C:120 Pcs   D:180 Pcs   E:240 Pcs

## Electrical Parameters

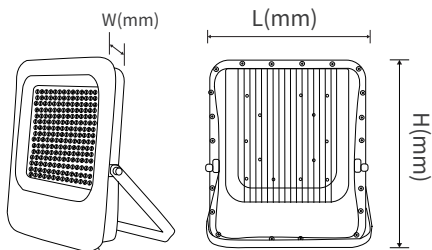
Power A	30W
Power B	50W
Power C	100W
Power D	150W
Power E	200W
Voltage	AC100-240V
Frequency	50/60Hz
Electrical Class	Class I   Class II
Work Temperature	(-30 °C to 50 °C)
Humidity	10 % to 90%
IP Grade	IP66
IK Grade	IK08
SPD	10KV   20KV (Optional)

## Driver

Driver Type	Non-isolated   isolated
Power Factor	> 0.9
Performance	> 90%
IP Grade	IP20 to IP67
THD	< 15%

## Materials and Properties

Material Of Shell	Aluminum (ADC12)
Material Of Lens	PC
Size A (mm)	181*160*37
Size A (mm)	220*190*37
Size A (mm)	280*242*50
Size A (mm)	315*270*50
Size A (mm)	345*288*54



## Tested according to

CE-LVD	EN 60598-2-3:2003 + A1:2011 EN IEC 60598-1:2021 EN 62471:2008 EN 62493:2015
CE-EMC	EN 55015:2013+A1:2015 EN 61547:2009 EN IEC 61000-3-2:2019 EN 61000-3-3:2013+A1:2019
ROHS	IEC62321-1:2013, IEC62321-3-1:2013 IEC62321-4:2013/AMD1:2017 IEC62321-5:2013, IEC62321-6:2015 IEC62321-7-1:2015, IEC62321-7-2:2017 IEC62321-8:2017

## Typical Photometric Features

120°

